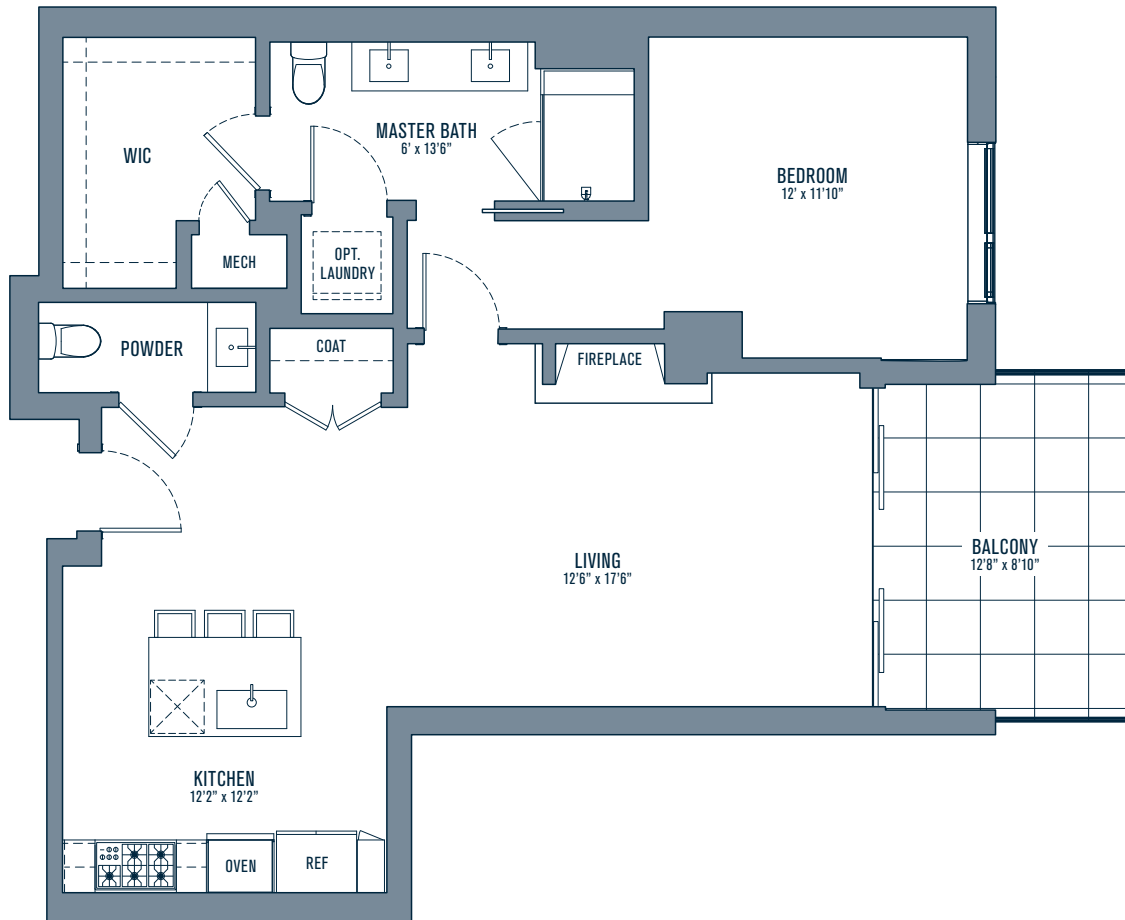




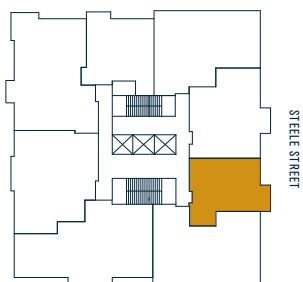
LAUREL

CHERRY CREEK



A1

1 BEDROOM
 1.5 BATHROOMS
 BALCONY
 ~934 SQ.FT.



NORTH

155 Steele Street
 Denver, Colorado 80206

LaurelCherryCreek.com

All figures, facts, information and prices are for marketing purposes only, and are subject to change at any time, without notice. All square footages and dimensions are approximate. No representation or warranty of any kind is being made herein or hereby, including any representation or warranty with respect to the accuracy or completeness of the information set forth herein. For example, and without limitation, all renderings, maps, site plans, photos, simulated views, floor plans, graphic images, drawings and all other information depicted in this brochure are illustrative only, and are provided to assist the purchaser in visualizing the units and the Project and are not intended to, nor do they necessarily, indicate the eventual development of the Project, or that the units depicted in this brochure will ultimately appear as shown, and should not be relied upon in deciding to purchase a unit. Purchasers should be aware that all finish materials, appliances, options and upgrades are subject to change or substitution by the Developer at any time without prior notice.